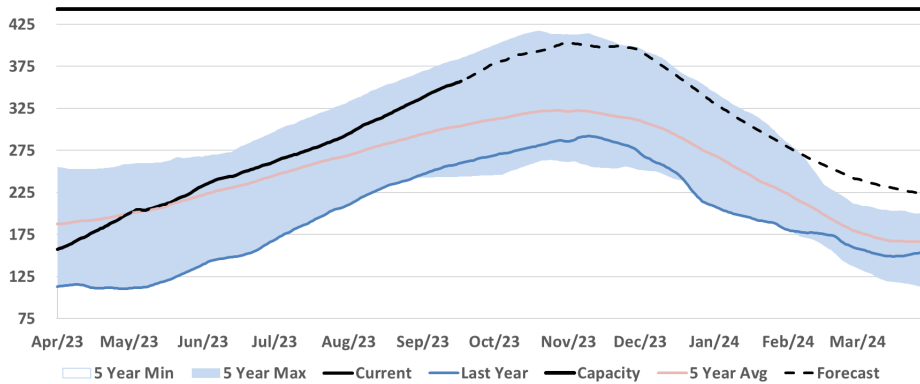
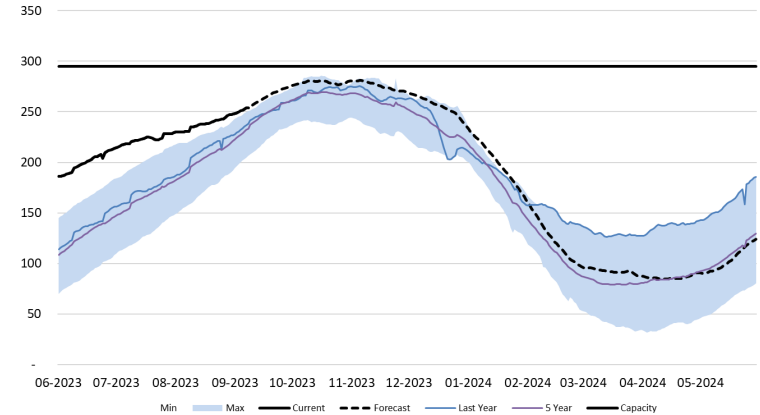


# AECO & Dawn Storage Levels

### AB Storage (Bcf)



### Total Dawn Storage (Bcf)



- Current inventories are 84% full vs 60% last year (103 Bcf surplus to last year)
- With a 13.7 Bcf average winter '23 / '24 production, estimates exiting winter= 219 Bcf or 50% full (15% or 62 Bcf higher vs last year)

- Current inventories are at 274 Bcf, 93% full vs 86% last year (23 Bcf surplus to last year)
- Storage expected to exit winter at 88 Bcf, 30% full. This is 9% higher than historical average levels, but much tighter than last year by 32%